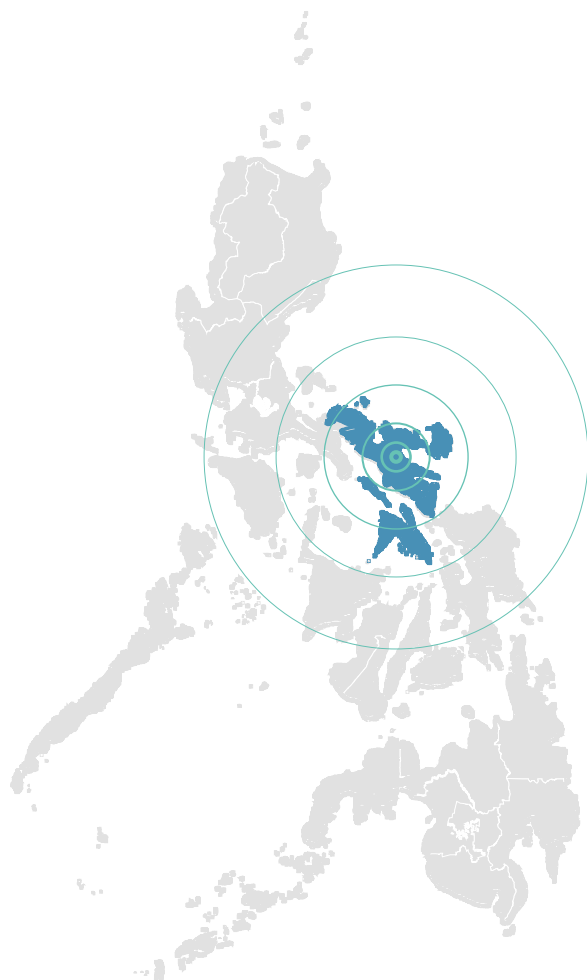


Republic of the Philippines

SURVEY ON DISASTER PREPAREDNESS AND CLIMATE CHANGE PERCEPTIONS

09 NOVEMBER 2024



INFORMATION SHEET 2

FOCUS ON
REGION V (BICOL REGION)
(DATA FROM FEBRUARY – MARCH 2024)

This information sheet presents selected results from a nationwide survey conducted in February – March 2024 among a random sample of 4,608 Filipinos. The sample was designed to provide representative data at the regional level. Data were collected using a standardized questionnaire administered during face-to-face interviews. The survey method ensured that diverse demographic and socioeconomic groups were proportionately represented, providing a reliable snapshot of public opinion across different regions. All interviews were conducted by trained field staff to maintain consistency and accuracy in data collection. Data were then weighted to match the population distribution, ensuring that the findings reflect the views of the broader population. More details about the methodology are available upon [request](#).

Vinck P, Daza M, Costales K, Stoddard H, Bollettino V. Information Sheet 2: Focus on Region V, Bicol – Survey on Disaster Preparedness and Climate Change Perceptions in the Philippines. Harvard Humanitarian Initiative. 2024.



HHI
RESILIENT
COMMUNITIES



HARVARD
HUMANITARIAN
INITIATIVE

In October 2024, Tropical Storm Trami (locally called Kristine) made landfall in the Philippines, claiming at least 151 lives, displacing over 771 thousand, and affected around 8.8 million Filipinos. Region V (Bicol) was most significantly affected by the storm, so this information sheet focuses on the region to better understand the context of household-level preparedness and disaster response.

FIGURE 1 DISASTER RISK PERCEPTION

The population of Bicol is acutely aware of their high risk of exposure to disasters. It is among the regions with the highest percentage of reported risk of exposure to impactful disasters, with 40% ranking their risk as high or extremely high, compared to 31% on average nationwide. These risks are most frequently associated with tropical typhoons or storms (97%), heavy rainfall (34%), volcanic eruption (33%), floods (23%), and earthquake (19%).

Perceived risk of exposure to disasters (% high - extreme) general population survey (n= 4,608)

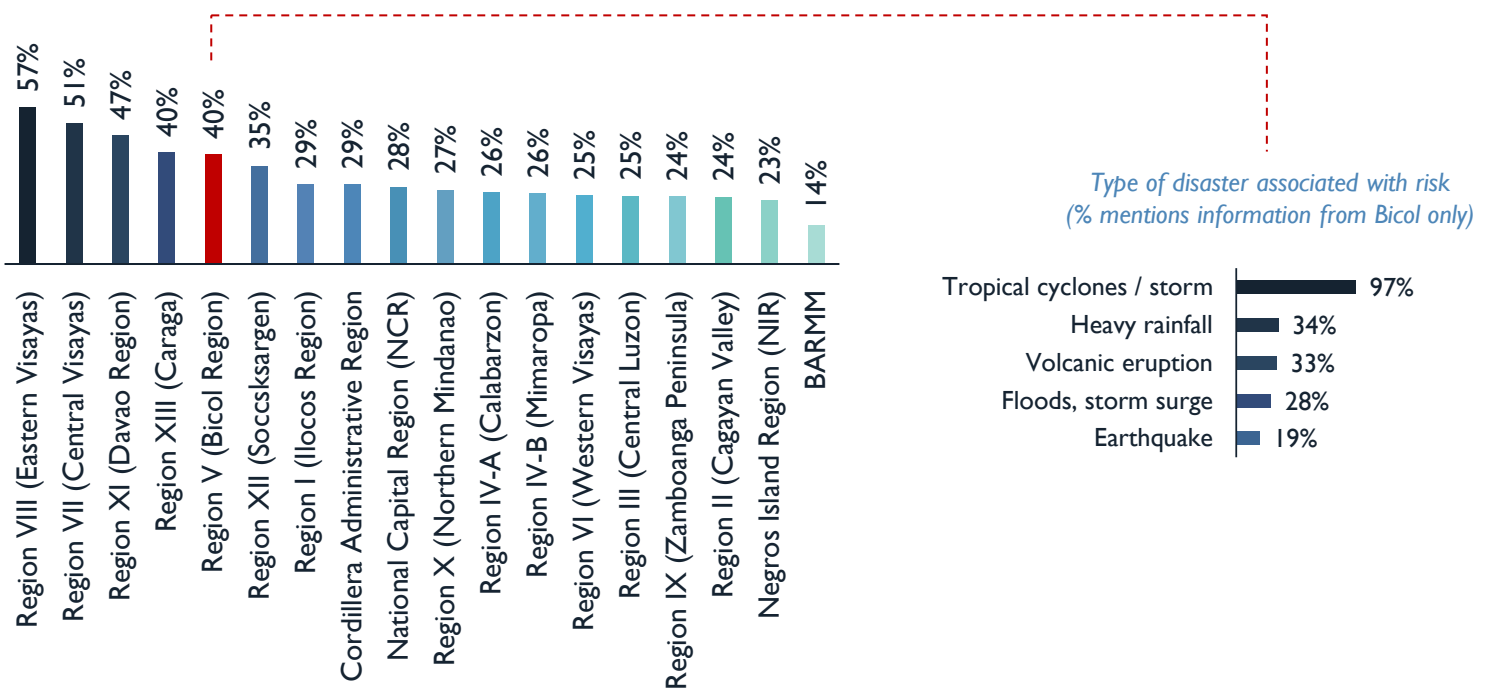
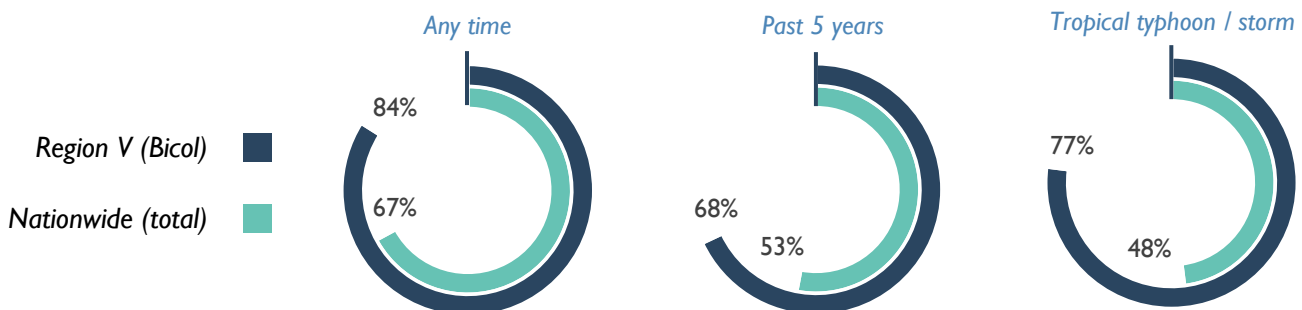


FIGURE 2 EXPOSURE TO DISASTERS

In part, the perception of risk is informed by past experiences. Compared to the general population, respondents in Region V (Bicol) were more likely to report exposure to significant disasters at any time in the past (84% v. 67%), exposure in the last 5 years (68% v. 53%), and exposure to tropical typhoons and storms (77% v. 48%).

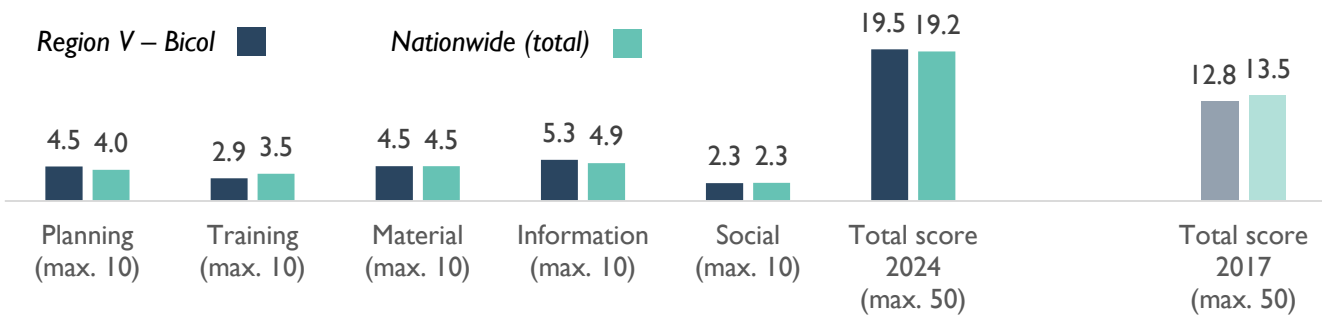
Past exposure to significant disaster (% yes) - general population survey (n= 4,608)



DISASTER PREPAREDNESS FIGURE 3

The survey assessed objective indicators of preparedness for disasters across five dimensions: planning (e.g. having a disaster plan, communication plan), training (e.g. participation in drill, training), material (e.g. having a go bag), information (e.g. monitoring warning), and social (e.g. social group membership). To facilitate comparison, scores were computed for each dimensions. The results show that, on average, participants in Bicol are not better prepared for disasters than the rest of the country (19.5 v. 19.2 average national score) despite the higher perceived risk and past exposure. Positively, the average score for Bicol has increased by 6.7 points from 2017, compared to 5.7 nationwide. While scores for planning and information are slightly higher, the score is lower for training compared to nationwide averages. This suggests gaps in training and drill opportunities.

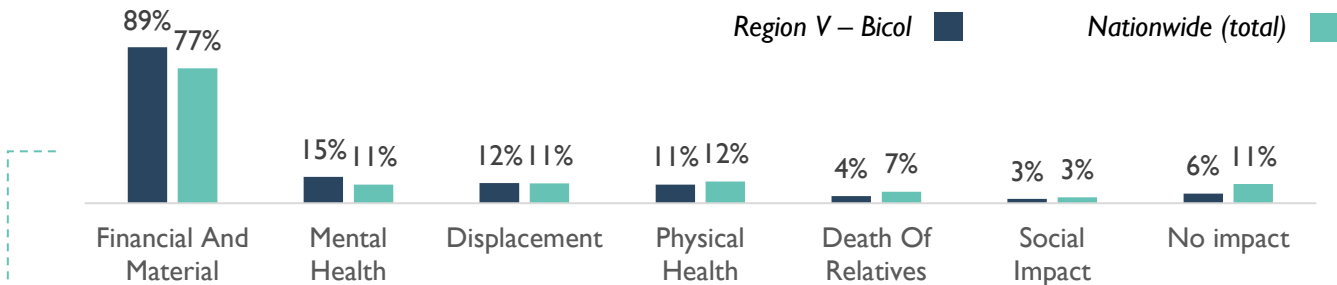
Disaster preparedness scores, general population survey (n= 4,608)



DISASTER EFFECTS AND RECOVERY FIGURE 4

Considering the high level of exposure to significant disasters in the Philippines, the survey explored the impact of such events, and how well those affected recovered from such events. The data show that the most reported impact is financial and material (89% in Bicol, 77% nationwide). Region V (Bicol) has one of the lowest percentages of participants who indicated they had not been able to recover from these events (18%). This suggests that although people in Bicol may not be better prepared for disasters according to our data, they demonstrate a higher capacity to recover from such events.

Effects of past disaster experiences, general population survey (n= 4,608)



Recovery status, general population survey (n= 4,608)

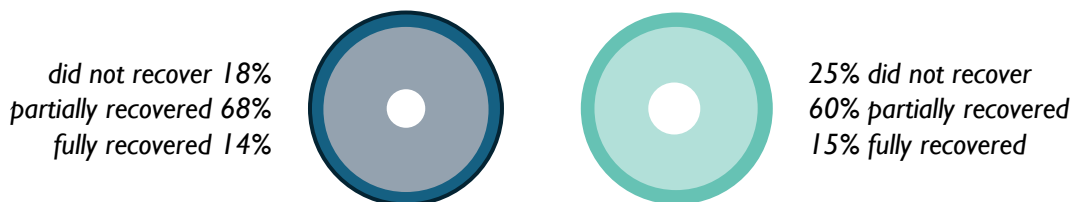


FIGURE 5 DISASTER ASSISTANCE

The ability to recover from disasters is likely influenced by the type and source of assistance received. The results to an open-ended question on what most helped participants recover do not suggest major differences between Region V (Bicol) and nationwide averages. Unspecified government assistance, along with food supplies and cash support, are the most common answers. However, the survey results show that the source of assistance differed in Bicol compared to nationwide results, with a higher percentage of the respondents identifying Local Government Units (73%) and relatives (52%) as sources of assistance in Bicol compared to nationwide averages (62% and 43%, respectively). This may indicate the importance of social ties at the local level in the recovery process.

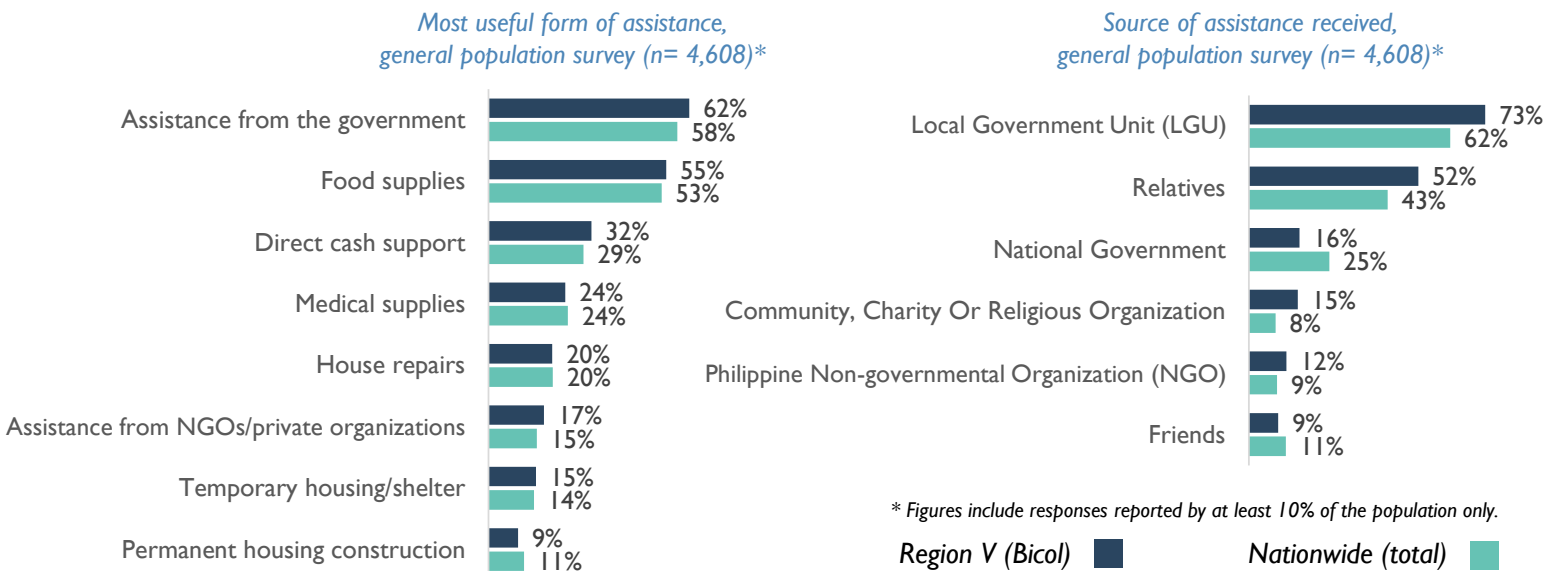
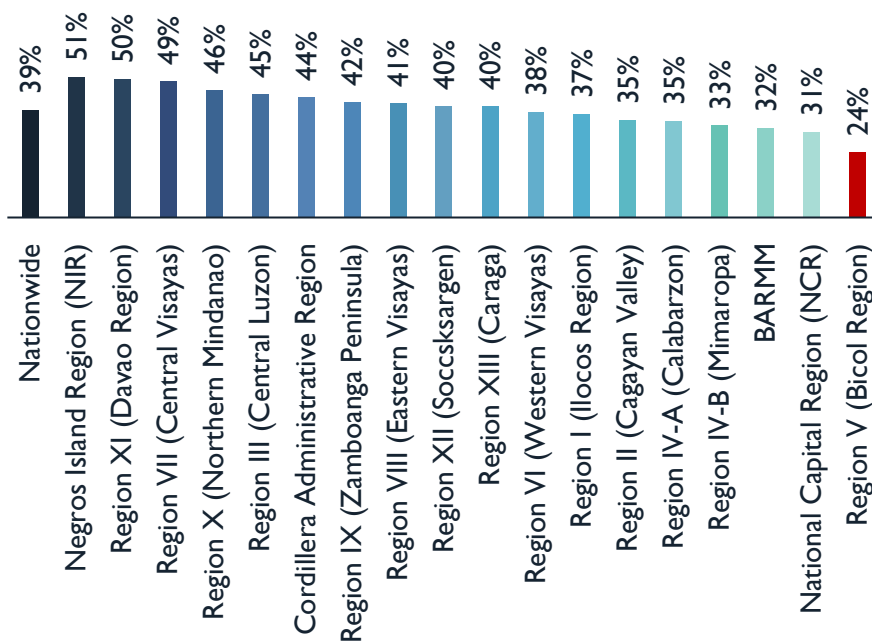


FIGURE 6 NATIONAL GOVERNMENT'S DISASTER PREVENTION AND RESPONSE EFFORTS

Local Government Units are an important source of assistance, as noted above. However, this does not translate in overall confidence in the efforts of the national government to ensure effective disaster prevention and response. Nationwide, 39% of participants judged these efforts positively. The lowest percentage was found in Region V (Bicol) with 24% only. This may reflect that the response is insufficient in a context of high perceived risk and past exposure.

Perception of national government's efforts to ensure effective prevention and response to disasters (% ranking efforts as good – very good), general population survey (n= 4,608)



The information presented in this publication/information sheet is for general informational purposes only. While every effort has been made to ensure the accuracy and completeness of the data, no representation or warranty, express or implied, is made as to its accuracy, completeness, reliability, or suitability for any particular purpose. The authors disclaim any liability for any errors or omissions in the content and for any loss or damage of any kind incurred as a result of the use of this information. The views and opinions expressed herein do not necessarily reflect those of any organization, institution, or individual associated with the publication.