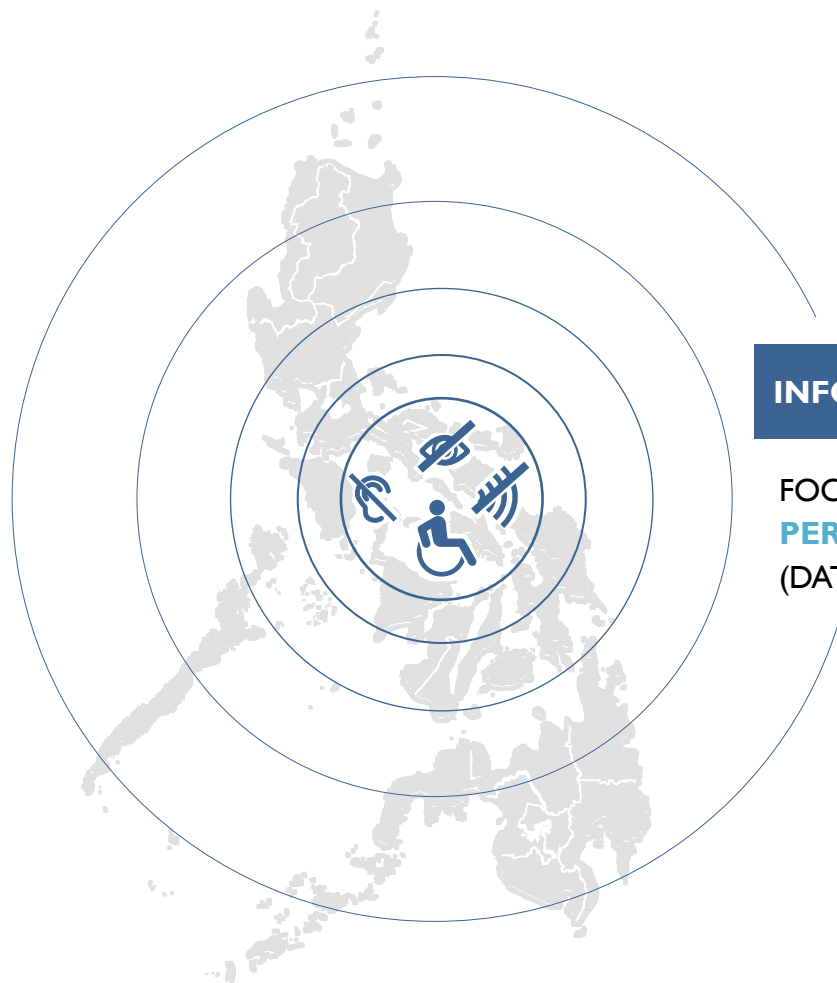


SURVEY ON DISASTER PREPAREDNESS AND CLIMATE CHANGE PERCEPTIONS

03 DECEMBER 2024



INFORMATION SHEET 4

FOCUS ON
PERSONS WITH DISABILITIES
(DATA FROM FEBRUARY – MARCH 2024)

This information sheet presents selected results from a nationwide survey conducted in February and March 2024 among a random sample of 4,608 Filipinos. The sample was designed to provide representative data at the regional level. Data were collected using a standardized questionnaire administered during face-to-face interviews. The survey method ensured that diverse demographic and socioeconomic groups were proportionately represented, providing a reliable snapshot of public opinion across different regions. All interviews were conducted by trained field staff to maintain consistency and accuracy in data collection. Data were then weighted to match the population distribution, ensuring that the findings reflect the views of the broader population.

Vinck P, Costales K, Daza M, Stoddard H, Bollettino V. Information Sheet 4: Persons with Disabilities – Survey on Disaster Preparedness and Climate Change Perceptions in the Philippines. Harvard Humanitarian Initiative. 2024.



HHI
RESILIENT
COMMUNITIES



HARVARD
HUMANITARIAN
INITIATIVE

Disaster Preparedness and Climate Change

FIGURE 1 PERSONS WITH DISABILITIES

The survey assessed disability status using a standardized tool, the Washington Group Short Set on Functioning. The results show that the most reported difficulty is related to vision (4% with a lot of difficulty or not being able to see at all), followed by serious difficulties walking or climbing stairs (3%). Overall, 5 percent of the population was found to meet the criteria to be considered as a person with disability (PWD). The percentage of PWDs is higher among older, less educated and poorer demographic groups.

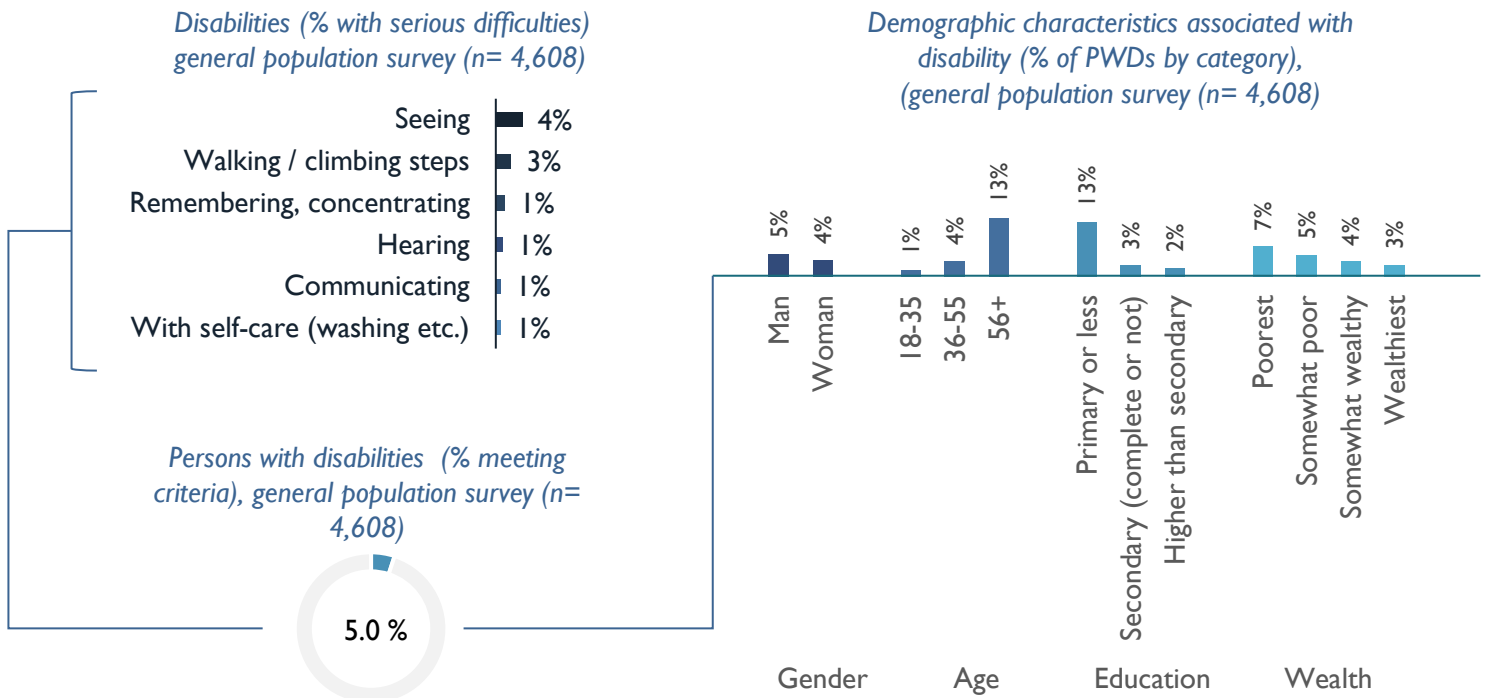
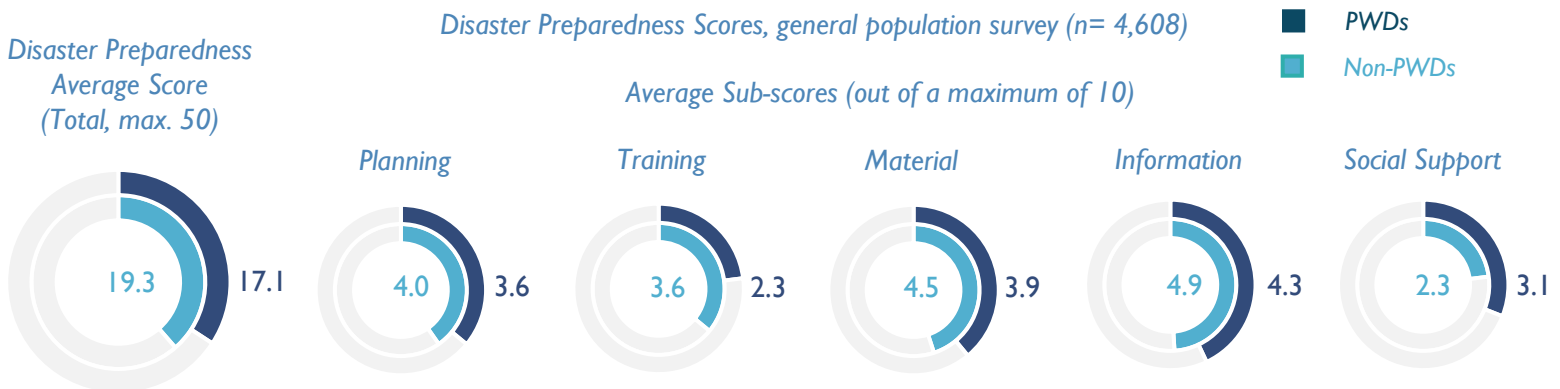


FIGURE 2 DISABILITY AND DISASTER PREPAREDNESS

To facilitate comparison of levels of preparedness between PWDs and the non-PWD population, we computed an overall score (maximum 50) and five sub-scores (maximum score of 10) corresponding to planning, training, material preparedness, information, and social support. The total average score is 17.1 among PWDs, and 19.3 among non-PWDs. Among sub-scores, the results show that the difference between PWDs and non-PWDs is largest for training (-1.3, 3.6 v. 2.3).



DISASTER RISK, EXPERIENCE, AND IMPACT FIGURE 3

Compared to the non-PWDs, PWDs report similar levels of exposure to significant disasters that caused significant impacts on their lives or properties, including lifetime exposure (66% PWDs vs. 67% non-PWDs) and recent exposure (49% v. 53%, respectively). PWDs are slightly more likely to perceive themselves to be at a high risk of such events (37% a lot / extremely at risk) compared to non-PWDs (30%). PWDs are also slightly more likely to report physical and mental health impacts from past disasters (17% and 14% respectively) compared to the rest of the population (12% and 10%, respectively). Among both groups, the most reported impacts were financial and material (76% among PWDs and 77%, among non-PWDs respectively).

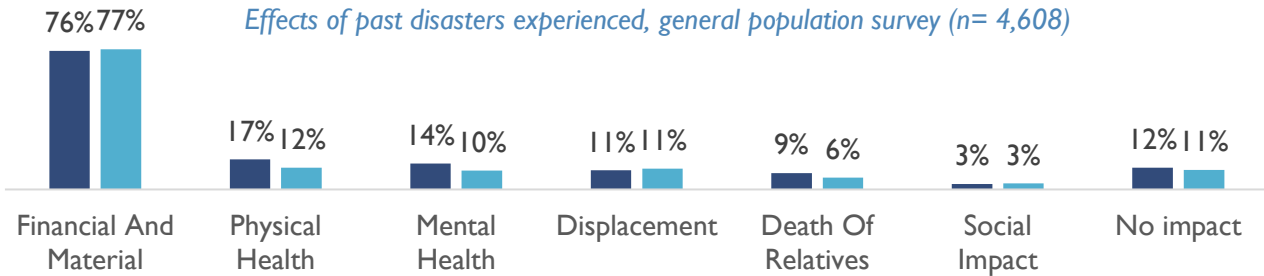
Perceived risk of exposure to significant disaster (% a lot – extreme), general population survey (n= 4,608)



Past exposure to significant disaster (% yes), general population survey (n= 4,608)



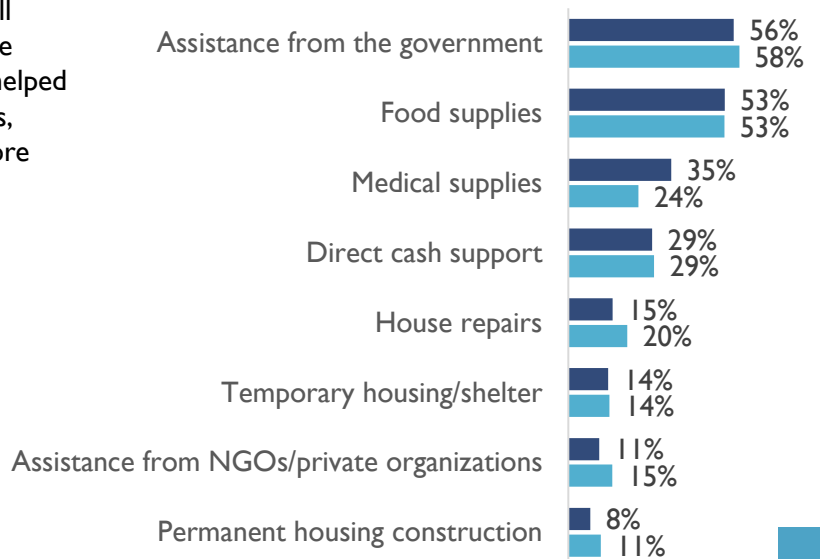
Effects of past disasters experienced, general population survey (n= 4,608)



DISASTER RECOVERY FIGURE 4

Among non-PWDs who experienced a significant disaster, just 24% indicated that they had not recovered at all from the event. In comparison, twice as many (48%) PWDs were similarly unable to recover at all from the significant disasters they experienced. The results to an open-ended question on what most helped participants recover are similar across both groups, except medical supplies / assistance, which was more frequently mentioned among PWDs.

*Most useful form of assistance, general population survey (n= 4,608)**



Recovered from past event (% not at all), general population survey (n= 4,608)

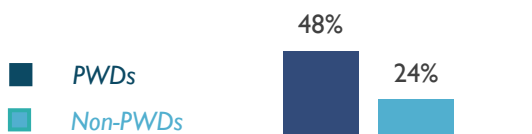


FIGURE 5 CLIMATE CHANGE AWARENESS AND GENERAL BELIEFS

Awareness about climate change is lower among PWDs (66%) compared to non-PWDs, (79%). For the participants who were not aware of the term “climate change”, interviewers provided a short, neutral definition to continue the survey. Overall, fewer PWDs believe climate change is real and/or caused by human activity among PWDs (79% and 51% respectively) compared to non-PWDs (86% and 67%, respectively). These results are likely influenced by education levels, wealth and access to information. Importantly, however, more PWDs believe they will be significantly affected by climate change within the next 5 years compared to non-PWDs (54% v. 46%).

Climate change awareness, beliefs, general population survey (n= 4,608)

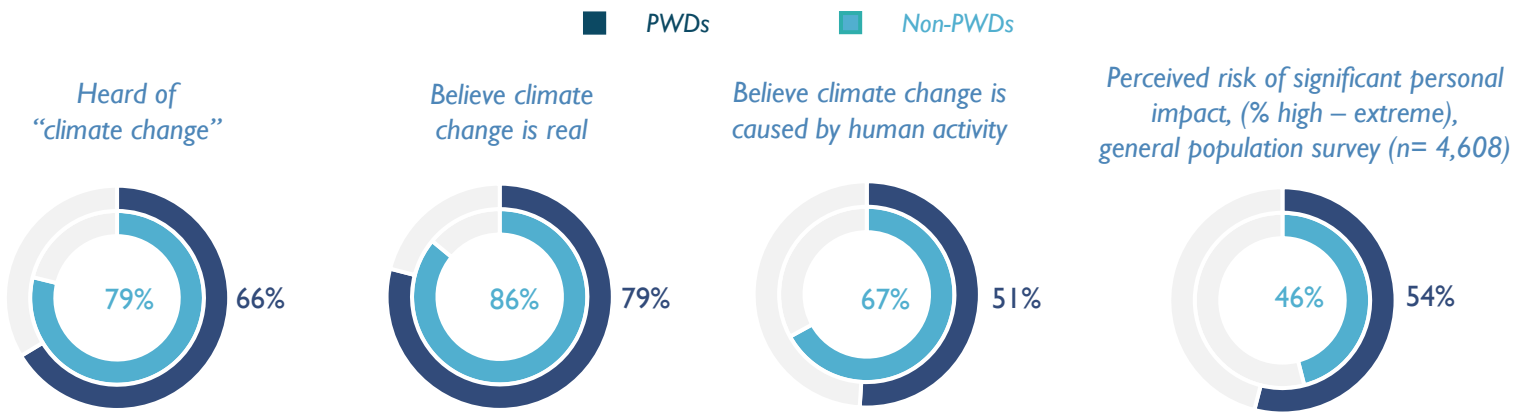
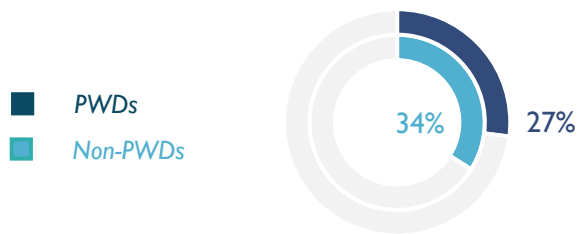


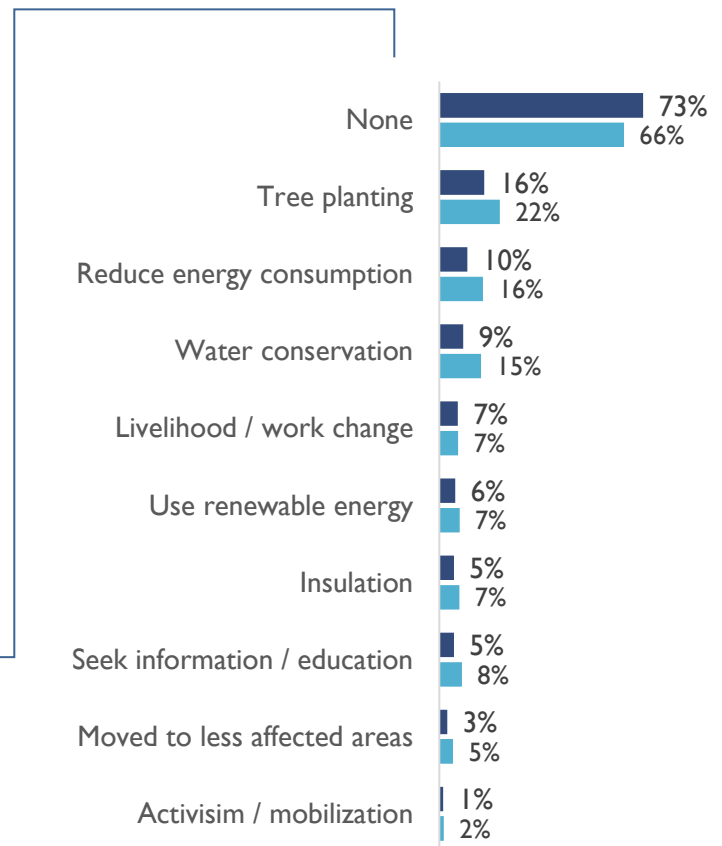
FIGURE 6 CLIMATE ACTION

Reflecting data on general awareness about climate change, fewer PWDs have taken action to adapt to the potential impacts of climate change compared to non-PWDs (27% v. 34%). The lower percentage of climate actions among PWDs compared to non-PWDs is reflected across both environmental and livelihood actions reported by participants in answer to a follow-up open-ended question.

Taken action to adapt to the potential impact of climate change? general population survey (n= 4,608)



Which actions?



The information presented in this publication/information sheet is for general informational purposes only. While every effort has been made to ensure the accuracy and completeness of the data, no representation or warranty, express or implied, is made as to its accuracy, completeness, reliability, or suitability for any particular purpose. The authors disclaim any liability for any errors or omissions in the content and for any loss or damage of any kind incurred as a result of the use of this information. The views and opinions expressed herein do not necessarily reflect those of any organization, institution, or individual associated with the publication.