

Evidence of SAF Deployment in South Kordofan

SUDAN

Equipment
Transports (HET)

Trucks

Produced in Collaboration With
Satellite Sentinel
The world is watching because you are watching.



HARVARD
HUMANITARIAN
INITIATIVE

DIGITALGLOBE®

Outpost Near Muglad

South Kordofan, Sudan



DigitalGlobe's Natural Color Satellite Image
January 12, 2011

Satellite Sentinel Project



HARVARD
HUMANITARIAN
INITIATIVE

DIGITALGLOBE®

Outpost Near Muglad

South Kordofan, Sudan



Outpost Near Kadugli

South Kordofan, Sudan



Compound

Possible Mi-8 Military Helicopter

Outpost Near Kadugli

South Kordofan, Sudan



Towed Artillery



DigitalGlobe's Natural Color Satellite Image
January 13, 2011

Satellite Sentinel Project



HARVARD
HUMANITARIAN
INITIATIVE

DIGITALGLOBE®

Outpost Near Kharassana

South Kordofan, Sudan



Compound

Towed Artillery

Fortification

Encampment

South Kordofan, Sudan



Shelters

Trenching
& Foxholes

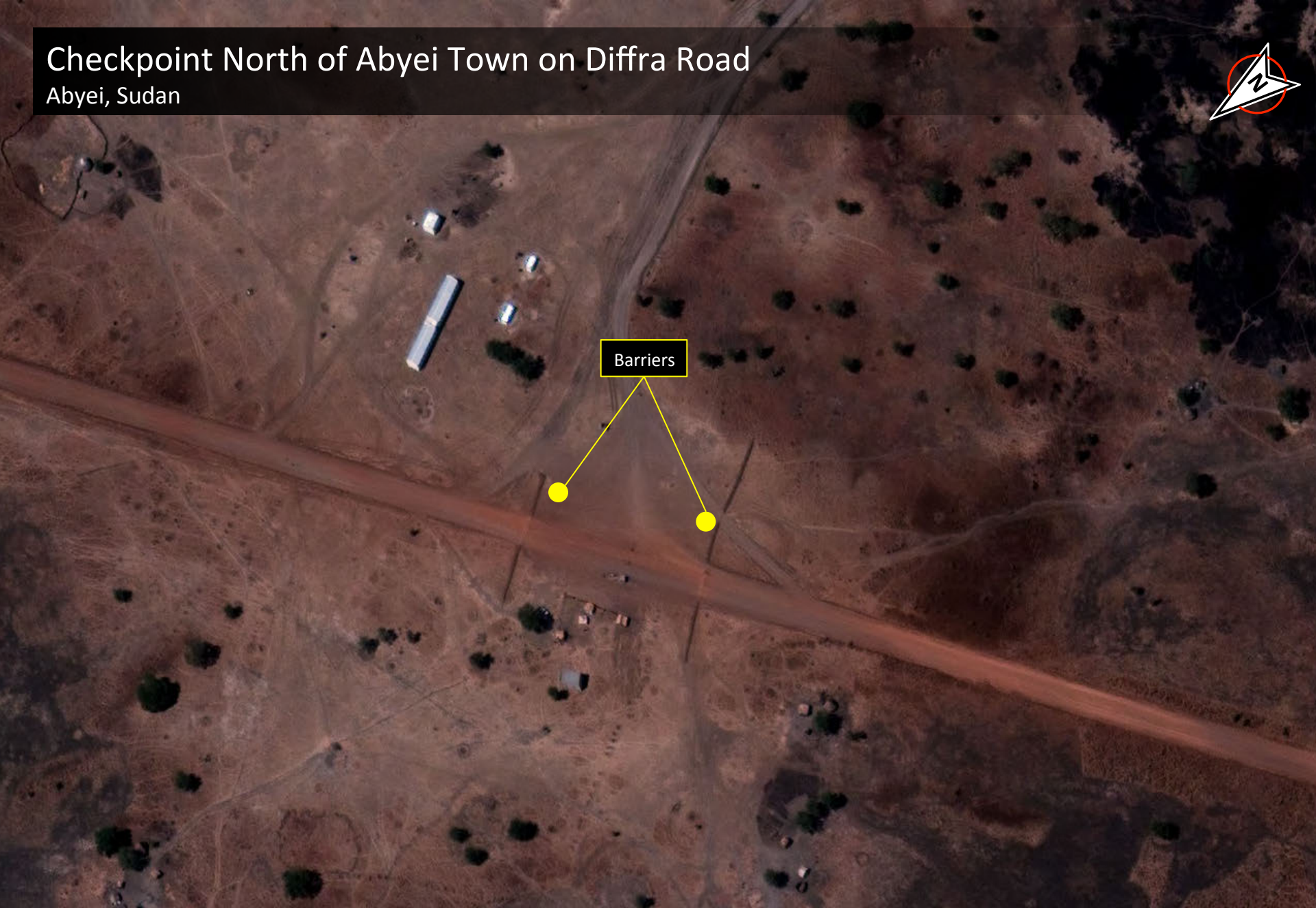
Checkpoint Near Kadugli

South Kordofan, Sudan



Checkpoint North of Abyei Town on Diffra Road

Abyei, Sudan



Barriers

Roadwork Near Muglad

South Kordofan, Sudan



DigitalGlobe's Natural Color Satellite Image
January 12, 2011

Satellite Sentinel Project



HARVARD
HUMANITARIAN
INITIATIVE

DIGITALGLOBE®

Roadwork Near Liri

South Kordofan, Sudan



Roadwork Being Conducted North of the Area

Satellite Sentinel Project



Evidence of Sudan Armed Forces Deployment in South Kordofan

Report #1

Submitted 27 January 2011

Prepared and reviewed by the following: *Nathaniel A. Raymond and Harvard Humanitarian Initiative's (HHI) Human Rights Documentation Team for the Satellite Sentinel Project, Charlie Clements, MD, Executive Director of the Carr Center for Human Rights Policy at the Kennedy School of Government, Vincenzo Bollettino, PhD, Director of Programs and Administration, Harvard Humanitarian Initiative, Major General Paul Eaton—USA (ret.), and Major General James “Spider” Marks—USA (ret.)*

FINDINGS

Recent SSP (Satellite Sentinel Project) monitoring of the region provides the first public evidence confirming some of the recent reports of SAF deployment in South Kordofan and checkpoints on the roads north of Abyei. SSP is also monitoring SPLA positions in the region as well. Imagery collected to date by SSP shows the following:

- At least company-sized deployments of SAF troops in the vicinity of Muglad, Kadugli, Kharassana and elsewhere in South Kordofan.
- APCs (armored personnel carriers), mobile artillery, helicopter transport, and light vehicles present at SAF encampments identified by SSP.
- Road infrastructure being rapidly improved in South Kordofan, including apparent repaving and road elevation near both military installations and civilian areas.
- Images of checkpoints south of Kadugli and between north of Abyei Town on the road to Diffra.

CONCLUSIONS

- Imagery collected so far by SSP corroborates claims from SPLA sources reported by the Small Arms Survey in December 2010 that SAF troops are deployed in Muglad, Kadugli, and Kharassana. The full strength and capacity of these deployments remains unconfirmed.
- SAF troops do not currently appear to be preparing forward movement from their current positions. There does not appear to be the necessary fuel trucks, troop transports, and other indicators consistent with the moving personnel, supplies, and equipment over distances.
- Evidence found of roadwork in South Kordofan could simply be related to oil production in the area and/or seasonal repairs. However, SSP will continue to monitor improvements to transportation infrastructure on both sides of the border given the importance of maintaining serviceable roads for any future military action by all parties in Sudan.
- Checkpoints on roads north of Abyei Town are visible by satellite, corroborating media, UN and other reports in the past two weeks of road stops in that area where civilians returning from north Sudan to the south have reportedly been detained, ambushed, and according to some reports, assaulted and raped.

BACKGROUND

The situation remains tense in the disputed territory of Abyei and elsewhere along the border between South Kordofan and Unity, Bahr el Ghazal, and Upper Nile States. Media, non-governmental agencies and other sources, including Enough Project field staff, have reported troop build-ups by both the SAF (Sudan Armed Forces) and the SPLA (Sudanese People's Liberation Army) on both sides of the line in recent months. SPLA sources, according to the Small Arms Survey, claim that approximately 55,000 SAF troops have been deployed in South Kordofan over roughly 100 garrisons. This figure is equal to approximately half of north Sudan's army, according to Jane's Information Group and other sources.

Despite the largely peaceful referendum on southern Sudan's self-determination this month, clashes broke out during the voting between Misseriya Arabs and Ngok Dinka and security elements associated with both sides, killing dozens in skirmishes near Abyei.

Recent negotiations between representatives of the Dinka and Misseriya in Abyei, as well as U.N.-hosted talks with government officials in Kadugli, have calmed tensions in the region for now. SSP is conducting regular and intensive monitoring of Abyei and surrounding areas in South Kordofan to assess the current human security situation and identify potential threats to civilians.

To learn more, visit www.enoughproject.org for the latest updates and actions related to Sudan.

EDITOR'S NOTE: The original version of this report attributed information reported by SPLA sources to the Small Arms Survey directly to the Small Arms Survey. Those attributions have been changed to reflect that the claims were made by SPLA sources who spoke to the Small Arms Survey, not the Small Arms Survey itself. Additionally, the information that the reported figure of 55,000 SAF troops deployed in South Kordofan represents approximately half of north Sudan's army has been attributed to Jane's Information Group and other sources.

END